

RAW POWER. **TOUGH BUILD.**

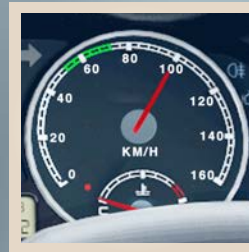
INTRODUCING THE SMARTEST MULTI-UTILITY PICKUP



TATA
XENON
CREW CAB

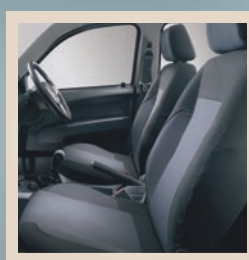


Meet the all-new **TATA** Xenon Crew Cab. The ultimate workhorse that stands by your every venture. Smart, sturdy and reliable, it's just what you need to get the job done, no matter what the job is.



Power packed performance

- 3.0 L Dicor turbocharged engine
- Peak power of 112 HP @ 3000 rpm
- Peak torque of 300 Nm @ 1600-2200 rpm
- Top speed 143 kmph



A resort on wheels

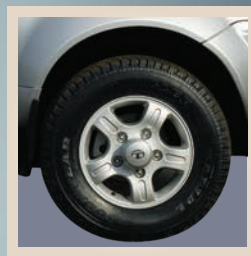
- Bucket seats with headrest and lumbar support
- Air conditioning, heating & demisting • Express down power windows
- Power steering, adjustable column • Mobile charging point





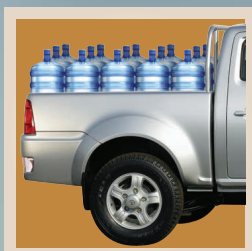
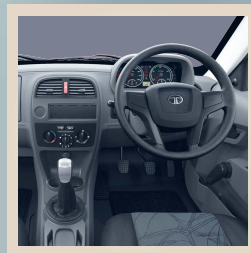
International styling on Indian roads

- Body color front bumper
- Chrome grill finisher
- Motorized headlamp
- Wheel caps as standard
- Stylized load body



Wild outdoors. Safety indoors.

- Central locking with engine immobilizer
- Collapsible steering column
- Door intrusion beams
- Motorized headlamp adjustment
- Disc brakes
- Tubeless tyres
- Provision for fog lamps



Takes the world off your shoulders

- Payload 1 ton
- Large loading deck (L x B x H) – 1.43 x 1.41 x 0.40 m
- All steel stylized load body



SPECIFICATIONS - XENON Crew Cab

ENGINE

Model	Tata 3.0L DICOR BS-III
Type	Water-cooled direct injection common rail turbocharged intercooled diesel
Capacity (CC)	2956
Max Output (HP) at rpm	112 @ 3000
Max Torque (Nm) at rpm	300 @ 1600-2200

CLUTCH

Type	Single plate dry friction
------	---------------------------

GEARBOX

Model	GBS-76-5/4.1 with overdrive
Type	Synchromesh on all gears
No. of Gears	5 forward, 1 reverse

STEERING

Type	Power steering
------	----------------

BRAKES

Type	Vacuum-assisted independent hydraulic brakes on front and rear wheels through tandem master cylinder & tandem booster
------	---

SUSPENSION

Front	Double wishbone type with torsion bar
Rear	Parabolic leaf springs

TYRES & WHEELS

Type	215 R 16 C 106 S tubeless
Wheel Rim	5.5 J X 16

FUEL TANK

Capacity	65 litres
----------	-----------

PERFORMANCE

Maximum Speed	143 km/h
Gradeability	32%
Minimum Turning Radius	6.0 m
Anti-roll Bar	At front and rear

DIMENSION

Wheel Base (mm)	3150
Overall Length x Width x Height (mm)	5125 x 1860 x 1730
Load Body Inside Length x Width x Height (mm)	1430 x 1410 x 410
Ground Clearance (mm)	200
Gross Vehicle Weight (kgs)	2950
Seating Capacity	4+1

For more information, contact: Tata Motors Limited, Commercial Vehicles Marketing Office, 20th Floor, Tower 2, One Indiabulls Centre, 841, Senapati Bapat Marg, Mumbai - 400 013 Tel: (022) 6658 6000 Toll free: 1800 209 7979 Fax: (022) 6658 6010 Log on to: www.tatamotors.com or SMS* <XENON PICKUP> to 5616161

The illustrations and photographs may show accessories and items of optional equipment that are not part of standard specifications. Due to printing processes, colours may vary slightly from those shown. All listed specifications are current and subject to change or upgrade without prior notice, in accordance with the company's policy of continuous improvement.



Enroll today! Call 1800 209 7979 or email: delight@tatamotors.com or visit www.tatadelight.com